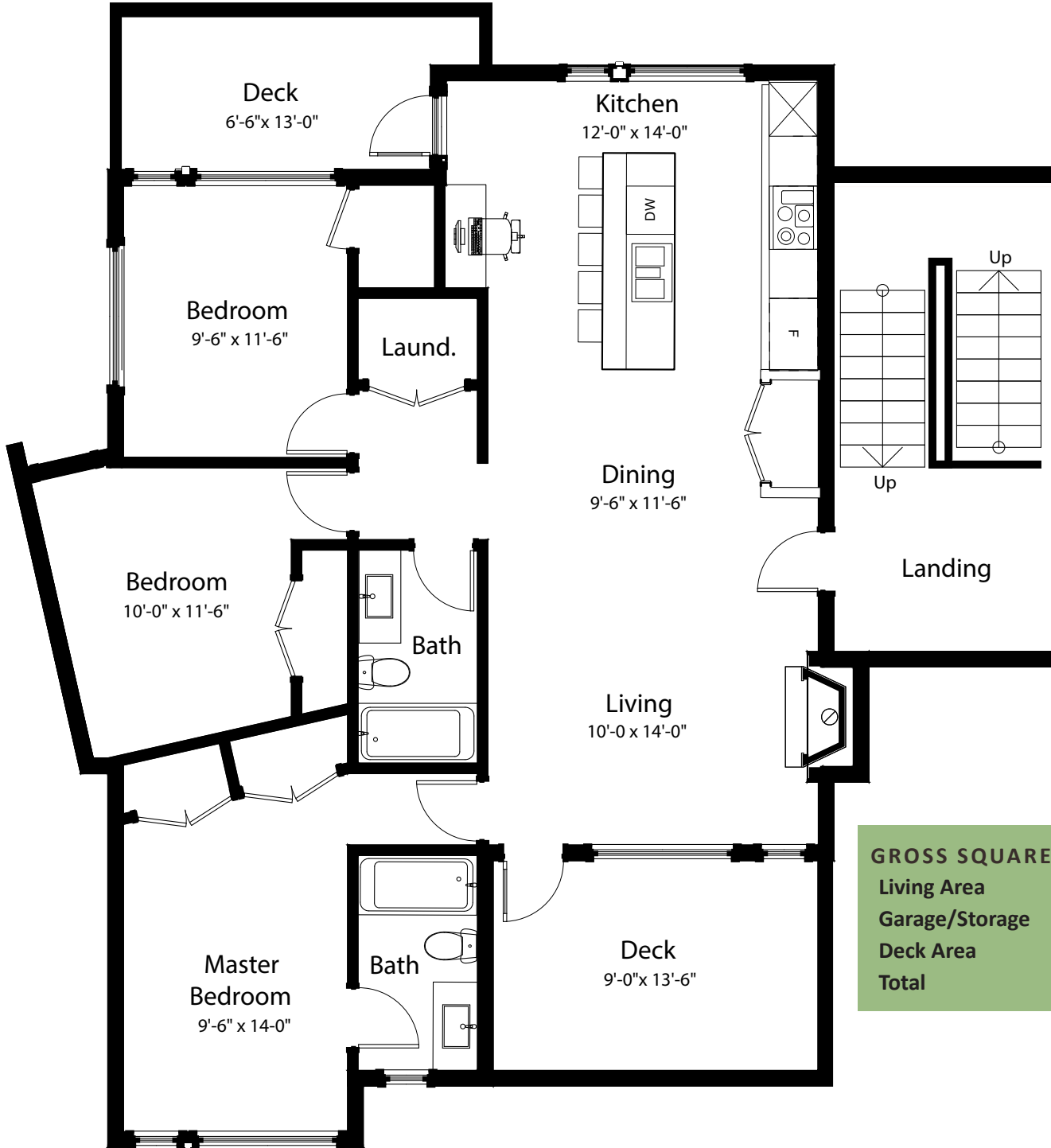




ALPINE LOFT - UNIT 6

v3.3C: 3rd Level, 3 Bdrm, 2 Bath, N. & S. Balcony



| GROSS SQUARE FOOTAGE* | |
|-----------------------|-------------|
| Living Area | 1065 |
| Garage/Storage | 412 |
| Deck Area | 200 |
| Total | 1677 |

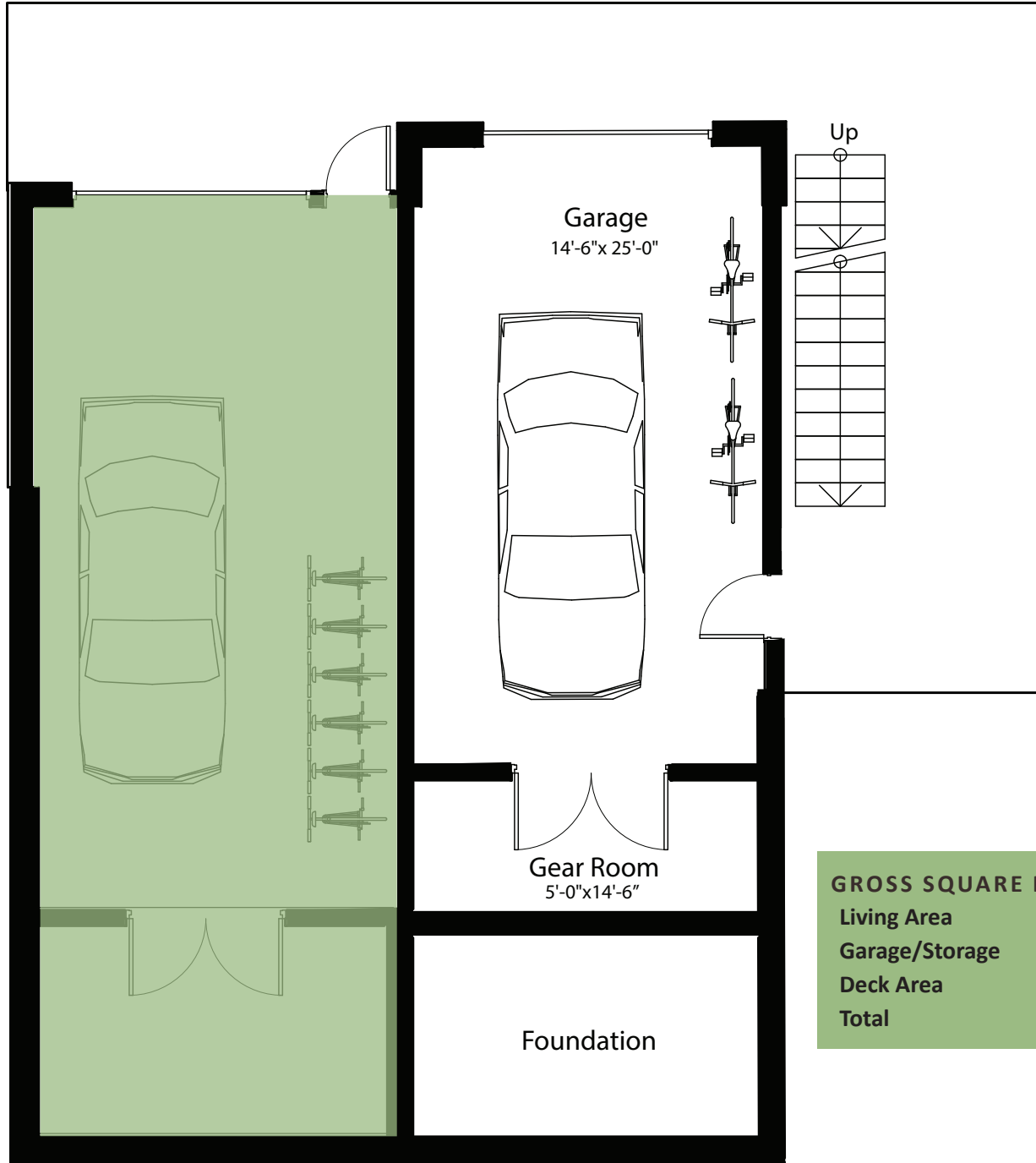
for a Life in Balance



The above is for information purposes only and is not a true representation of the final project. The Developer reserves the right to alter, change, or substitute appliances, lighting, and interior finishes and materials with alternatives that are of like or similar quality. Any indication of dimensions is for information purposes only and may vary at construction and installation - at the developers discretion. The Developer reserves the unfettered right to make changes to the floor plans, project design, specifications & interiors, and exterior landscaping. *FINAL DIMENSIONS, SQUARE FOOTAGE ESTIMATES, INDICATED MEASUREMENTS, FLOOR PLANS AND PROJECT CONFIGURATION MAY VARY, AND MAY VARY FROM OTHER MEASUREMENT STANDARDS SUCH AS RECA'S RMS.



ALPINE LOFT - UNIT 6
OVERSIZED GARAGE: Single Garage + Tandem Stall



| GROSS SQUARE FOOTAGE* | |
|-----------------------|-------------|
| Living Area | 1065 |
| Garage/Storage | 412 |
| Deck Area | 200 |
| Total | 1677 |

for a Life in Balance



The above is for information purposes only and is not a true representation of the final project. The Developer reserves the right to alter, change, or substitute appliances, lighting, and interior finishes and materials with alternatives that are of like or similar quality. Any indication of dimensions is for information purposes only and may vary at construction and installation - at the developers discretion. The Developer reserves the unfettered right to make changes to the floor plans, project design, specifications & interiors, and exterior landscaping. *FINAL DIMENSIONS, SQUARE FOOTAGE ESTIMATES, INDICATED MEASUREMENTS, FLOOR PLANS AND PROJECT CONFIGURATION MAY VARY, AND MAY VARY FROM OTHER MEASUREMENT STANDARDS SUCH AS RECA'S RMS.